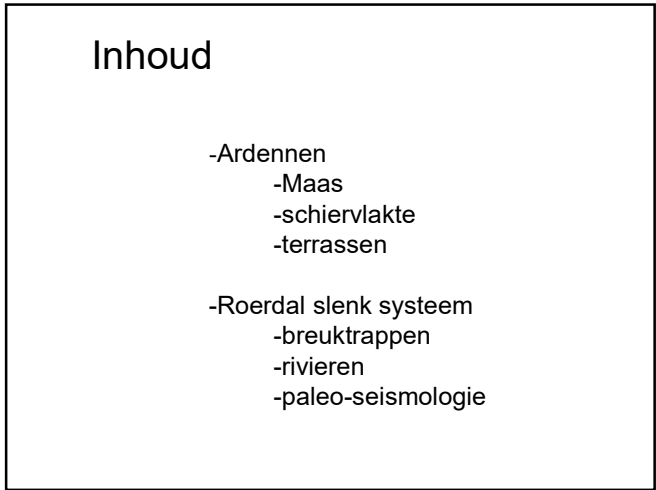
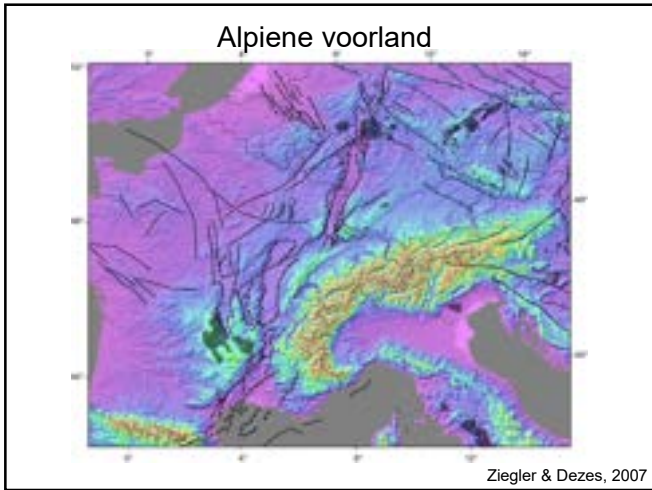




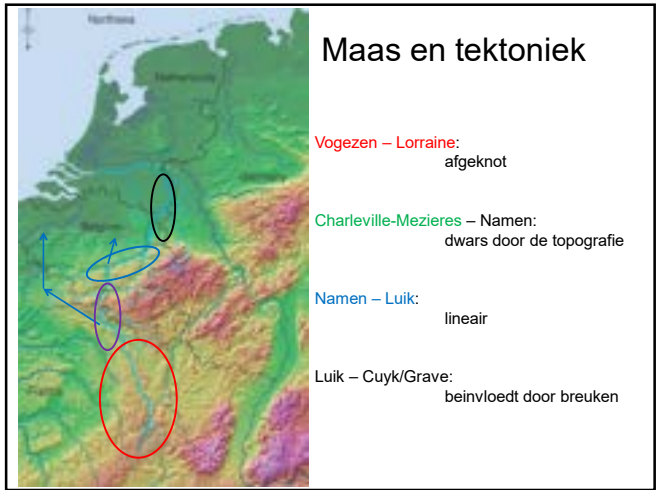
1



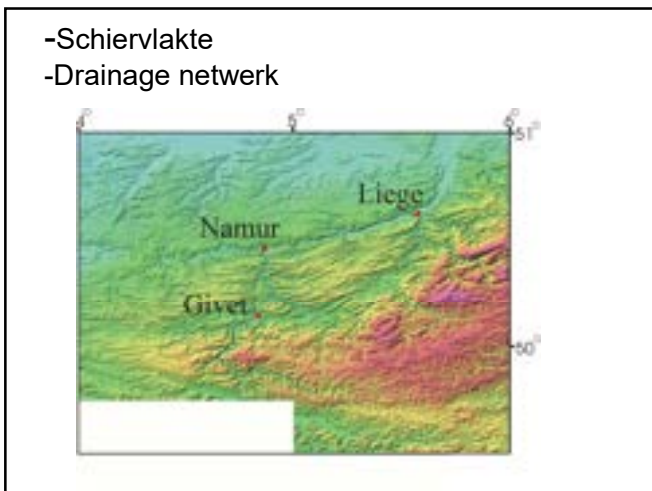
2



3



4



5



6

Ingesneden meanders



7

Ingesneden meanders Semois



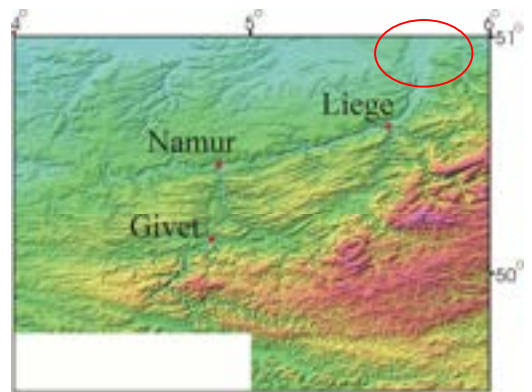
8

Saarschleife (Eifel, Duitsland)



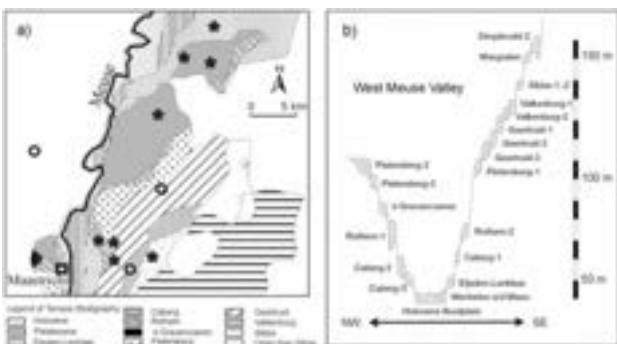
9

Maastrichtse Maas terrassen



10

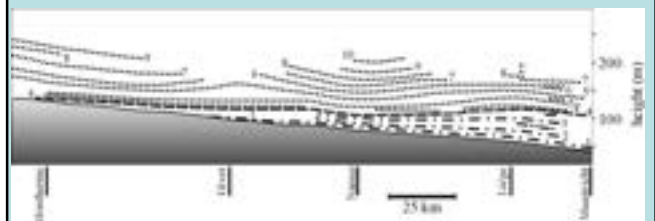
Maas terrassen



Terras = Klimaat oscillatie
 Terras opeenvolging = langdurige insnijding= tektonische opheffing
 Laterale verplaatsing = tektonische scheefstelling

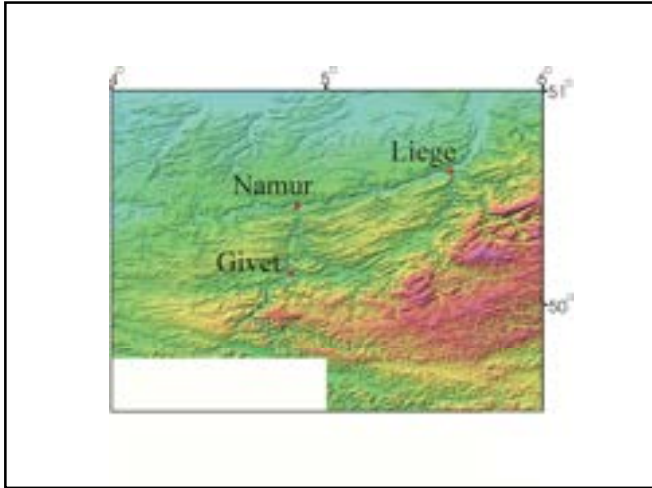
11

Correlatie van terrassen langs de Maas



-doming te Givet
 -doming nabij Liege/Luik
 -afname van insnijding vanaf terras 4, dankzij onthoofding

12



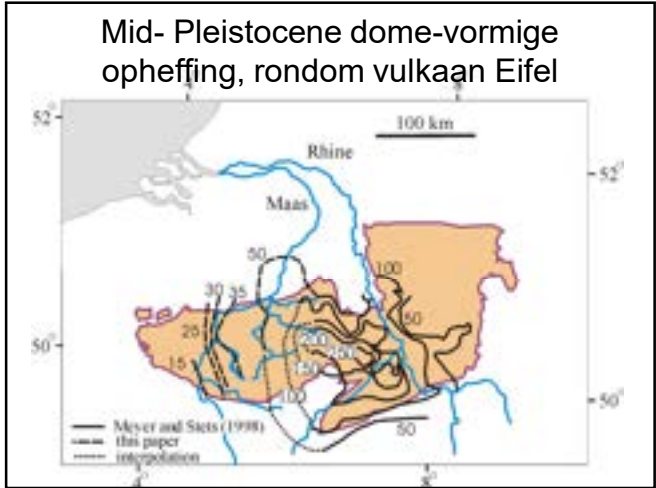
13



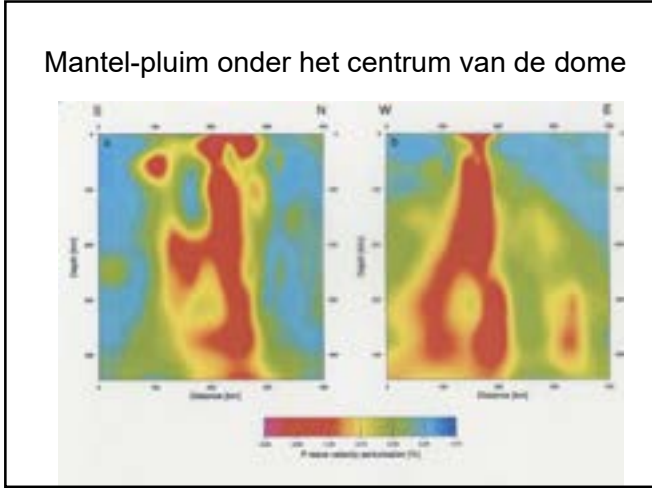
14



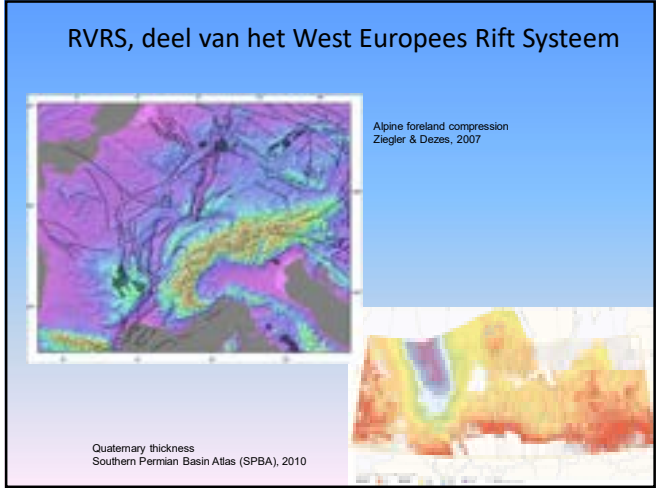
15



16

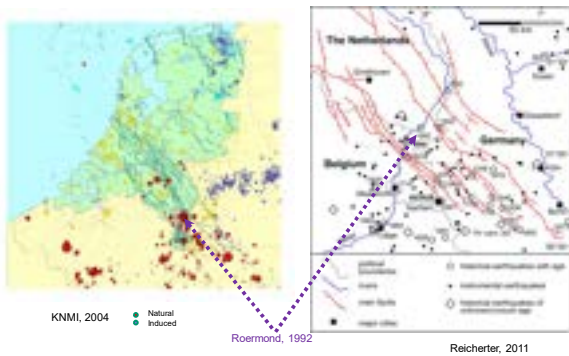


17



18

Aardbevingen



19

Effect van breuken in het landschap

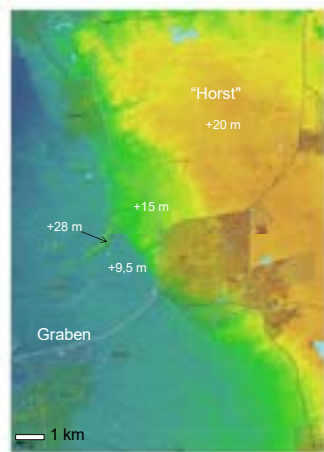


20

Breuk-tredes

Peelrandbreuk-zone

Uden



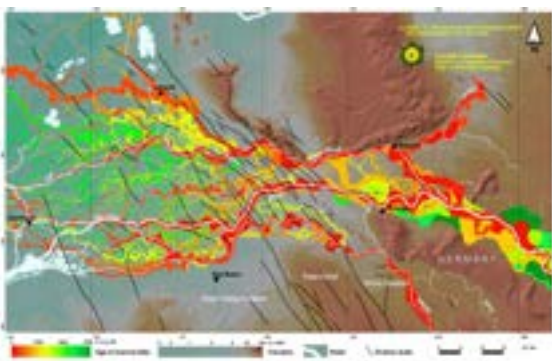
21

Peelrandbreuk Uden



22

Breuken en de Rijn-Maas delta

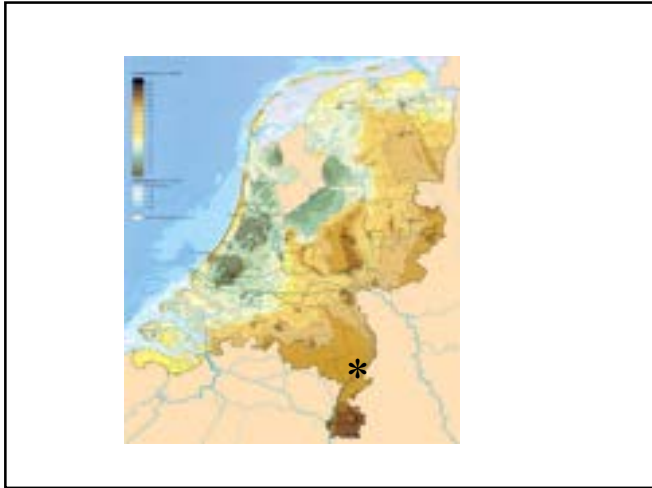


23

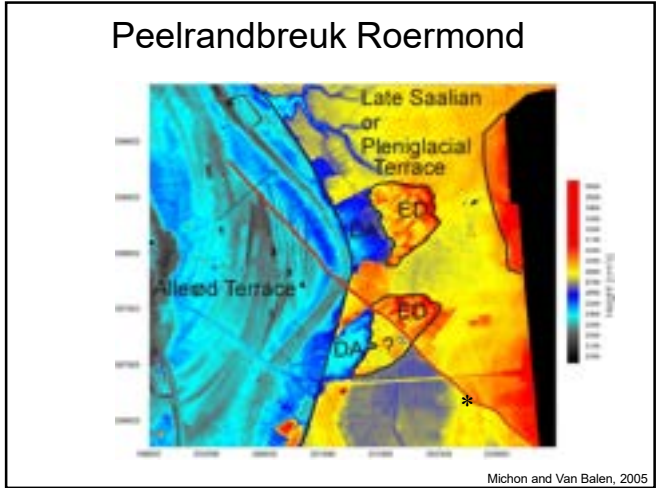
Aardbevings schade
aan dijk van de Maas



24



25



26



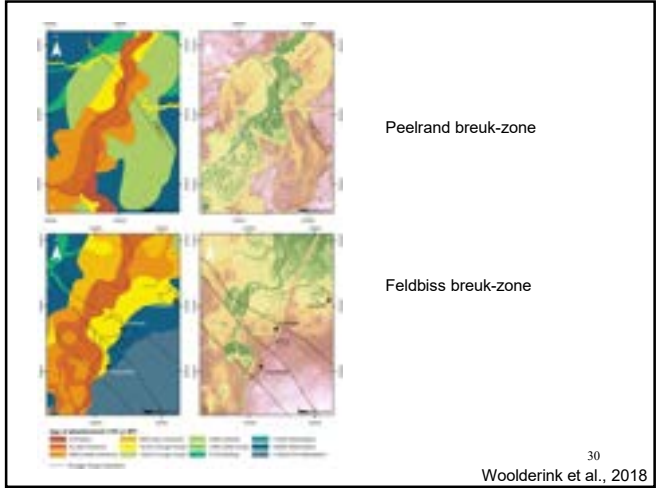
27



28

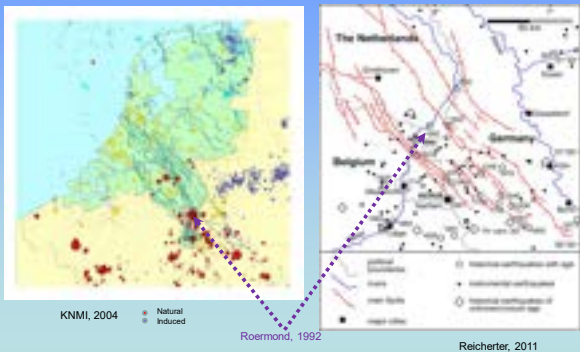


29



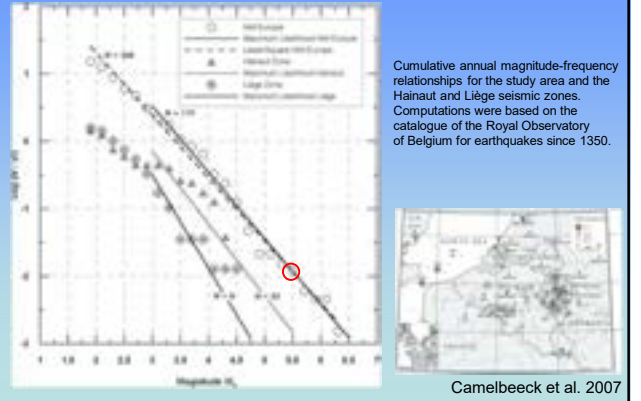
30

Aardbevingen



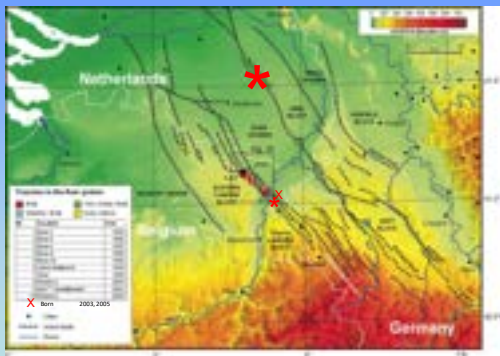
31

Herhalingsinterval



32

Sleuven onderzoek, Bakel



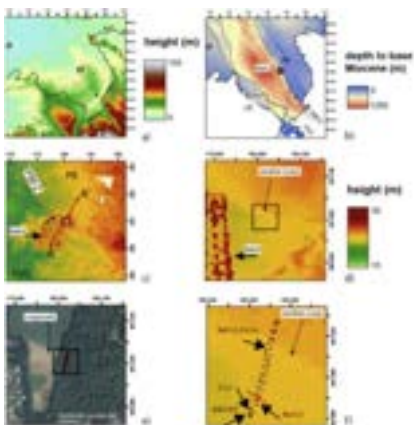
33

Bezoekersdag, 19 december 2014



34

Bakel sleuf



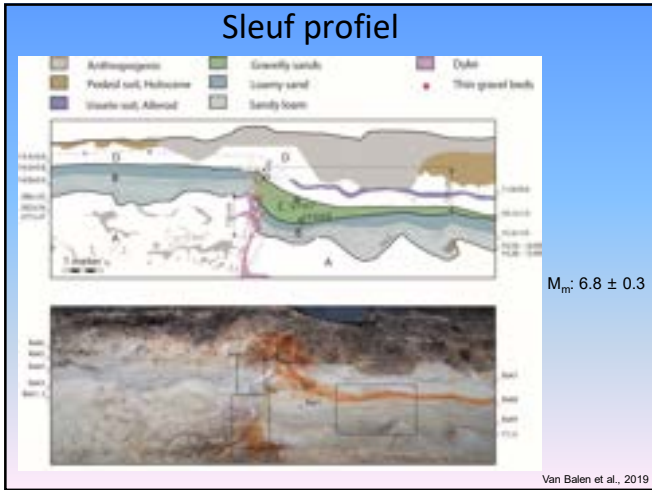
Van Balen et al., 2019

35

Breukpatroon en involuties



36



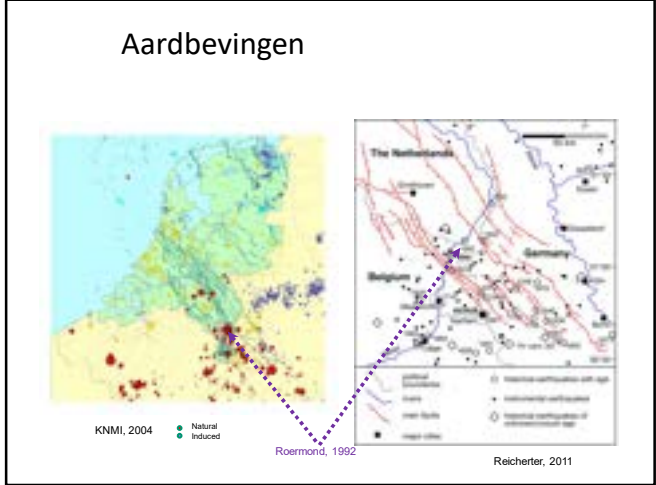
37



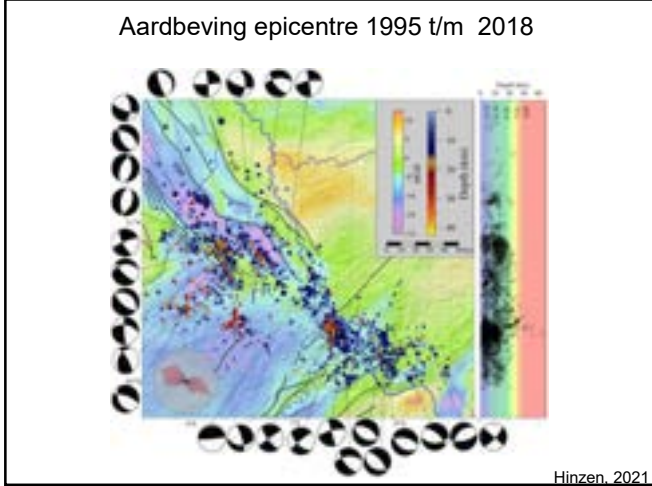
38



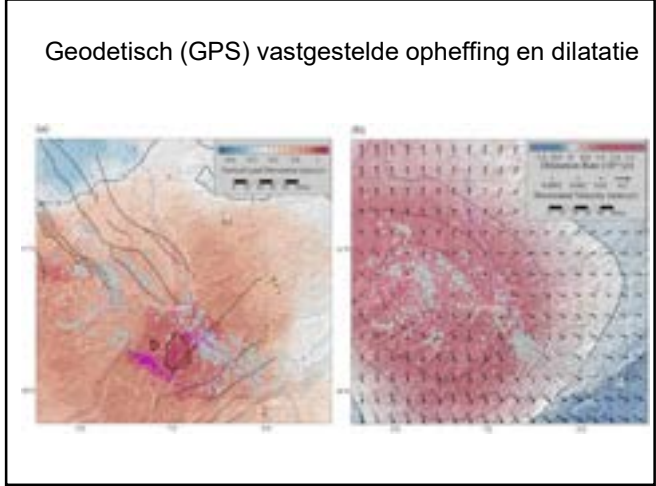
39



40



41



42

Conclusies

Ardennen:

- plooivormige opheffing
- mantelpluim

Roerdal slenk systeem:

- actieve breuken
- breuktrede
- invloed op rivieren
- aardbevingen:
 - plaattektoniek
 - + glacio-isostasie + mantel pluim
 - magnitide 6.8